



# GREATER COPENHAGEN

Grænsekomiteer 2022 03 10

A map of Europe with a grey background and white outlines of countries and regions. A central region, including parts of France, Germany, and the Benelux area, is highlighted in orange. Large orange numbers and white text labels are overlaid on the map. The number '1' is positioned over the British Isles, '2' is in the north, '4' is in the central-eastern part, '85' is in the south, and '4.4' is in the southeast. Labels 'vision', 'countries', 'regions', 'municipalities', and 'mil. inhabitants' are placed near their respective numbers.

**1**

vision

**2**

countries

**4**

regions

**85**

municipalities

**4.4**

mil. inhabitants

WE WANT TO PUT EUROPE  
– AND GREATER COPENHAGEN –  
ON THE GLOBAL INNOVATION MAP

GREATER  
COPENHAGEN

# Big ambitions, tangible goals

**0 technical barriers to people living in Sweden, who wish to work in Denmark – and vice versa.**

**A 2<sup>nd</sup> and 3<sup>rd</sup> connection across the Øresund. First, Helsingør-Helsingborg. Secondly, a metro between Copenhagen & Malmö**

**Be world-leading in public-private innovation in the Life Science sector.**

**Number 1 in Europe in public-private digital infrastructure.**

**Europe's Silicon Valley for Green Tech solutions.**



# GREATER COPENHAGEN

# The green sector in GCHP



Production value  
80 billion DKK, 32,000  
full time employees\*



1.8% of all jobs  
within GCHP are in  
the green sector\*



Manufacturing is the  
most represented  
industry with 26%

## Future economic potential

Energy efficiency  
5 – 21 billion DKK  
2,100 – 8,600 new jobs



Circular economy  
13 – 23 billion DKK  
5,300 – 9,500 jobs



CO<sub>2</sub> neutral  
10 – 18 billion DKK  
4,100 – 7,400 jobs

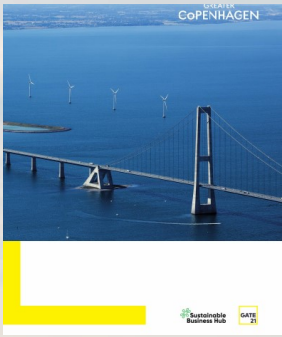


Climate robustness  
3.5 – 4.4 billion DKK  
2,900 – 3,700 new jobs

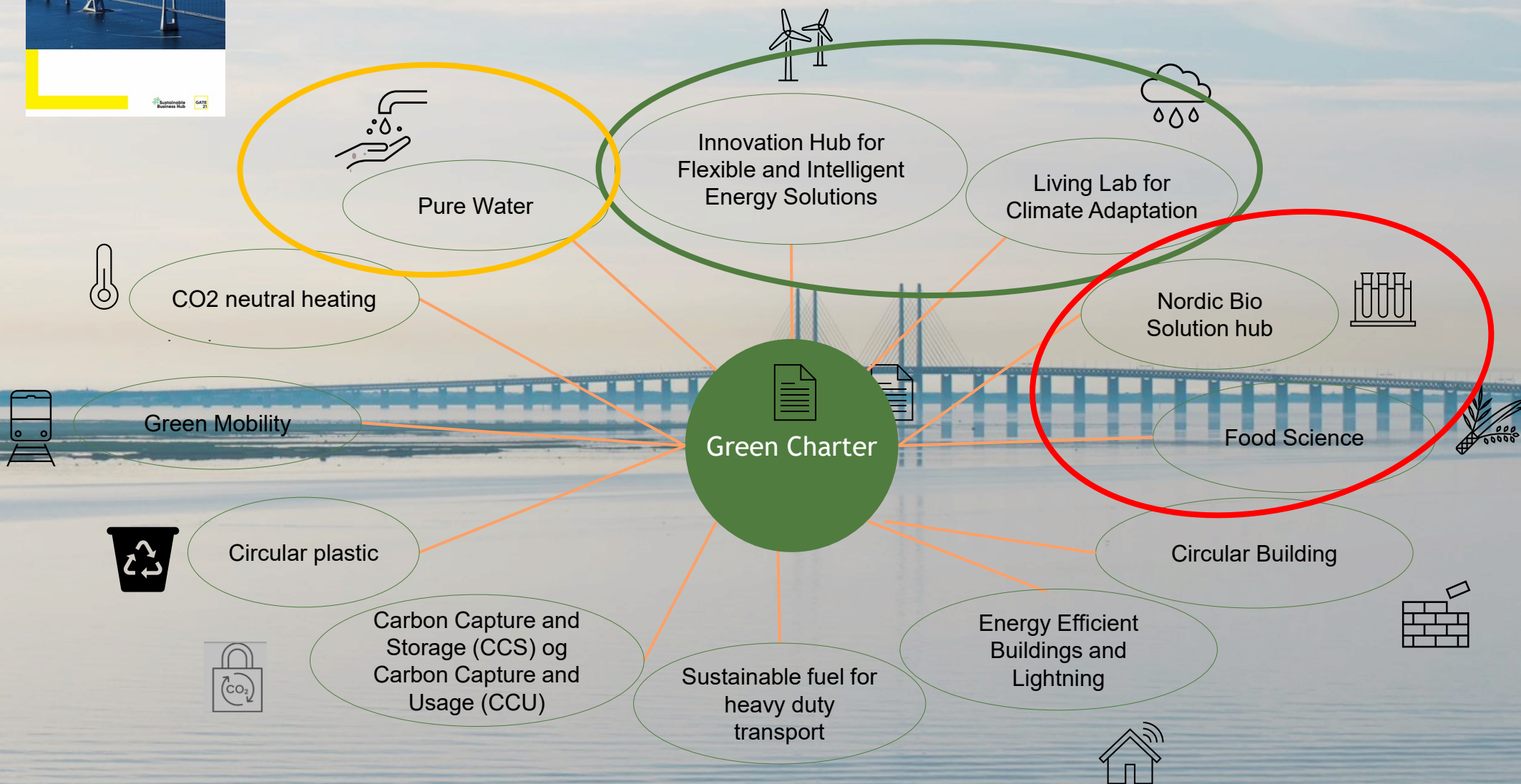
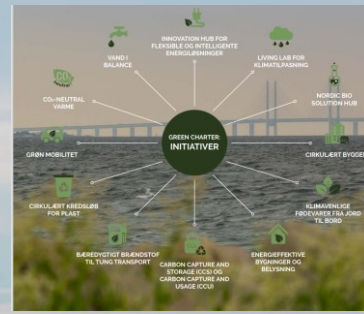
# FROM BIG AMBITIONS TO SPECIFIC TARGETS

- CO<sub>2</sub>-NEUTRAL GREATER COPENHAGEN
- ENERGY EFFICIENT GREATER COPENHAGEN
- CIRCULAR GREATER COPENHAGEN
- CLIMATE RESILIENT GREATER COPENHAGEN





# GC GREEN CHARTER Q2 2022





# Innovation and Green Growth Partners

4

v201209,cgre

GREATER COPENHAGEN

## Potentielle partnere

Knowledge Hub Zealand

GREATER COPENHAGEN





# GREATER COPENHAGEN

# CASE: WHY **FOCUS** ON CLIMATE ADAPTATION?



# BURNING PLATFORM FOR **INNOVATION** AND SUSTAINABLE ANSWERS

Large investments in climate adaptation efforts.

Expected **100 MIA DKK** in 10 years

Expected **50% OF INVESTMENTS** will be in  
**DATA, DIGITIZATION AND TECH**



# DK/S CROSS BORDER LIVING LAB FOR CLIMATE ADAPTATION WITH STRONG PARTNERS



HELISINGBORG



Malmö stad



sweden  water research

GREATER  
COPENHAGEN



DANMARK I SVERIGE  
Udenrigsministeriet



Region  
Hovedstade



Novafos



GREATER  
COPENHAGEN

# AMBITIOUS GOALS

- Share and commercialize **WEATER RADAR DATA**
- Pursue **CLEVER AND INNOVATIVE INVESTMENTS** of 100 mia DKK
- Transfer knowledge and **SOLUTIONS** between water authorities, start ups, utility companies and knowledge institutions
- Transition of climate challenges to **POSITIVE GREEN GROWTH EFFECTS FOR DK AND S**



Potential GDP growth  
Lower bound  
3.5  
Higher bound  
4.4

Potential job creation  
Lower bound  
2,900  
Higher bound  
3,700



Source: Calculations by Damvad Analytics based on SOU 2017:42 (2017)



[greatercph.com](http://greatercph.com)



Greater Copenhagen



@GreaterCph

Director, GC Green  
Nicolai Juel Vædele  
[njv@greatercph.com](mailto:njv@greatercph.com)  
+45 21371989